

GREENPRO

designed by ghibli & wirbel

POWER WD 36 P



GoinGreen
Ghibli & Wirbel Sustainable Vision

EU green
sheet 

COMMITMENT TO THE ENVIRONMENT

The focus on environmental protection and pollution reduction is an issue of global interest. The Planet's resources are not infinite and, for this reason, must be preserved carefully, without waste, respecting ecosystems and biodiversity. This awareness leads to the need to make even **economic growth more sustainable and environmentally friendly**.

Ghibli & Wirbel makes a daily and concrete commitment to becoming an increasingly sustainable company. This important change is represented and told through the new GoinGreen symbol. In fact, the company has embarked on a path towards sustainability that will be increasingly enriched by projects related to this issue in the coming years. In this new symbol, the colours of the institutional logo, yellow and blue, icons of Ghibli & Wirbel's quality and reliability, blend to form the colour green, an emblem of the initiatives undertaken to protect the environment. Whereas the pinwheel represents the future and expresses a fundamental concept: the time has come to take action to ensure a better tomorrow for future generations.



GoinGreen
Ghibli & Wirbel Sustainable Vision

The company, certified ISO 9001 since 1995 (Quality Management System), strives to ensure safe and healthy working environments and to be an environmentally responsible organisation. Ghibli & Wirbel is also dedicated to constantly reducing energy and water consumption, using less paper and fuel, reducing noise in all its forms, and keeping waste production as low as possible. The entire production process applies **principles of environmental and social sustainability**: the company has started the process to obtain ISO 14001 (Environmental Management System Certification) and SA 8000 (Social Accountability) certification with the CSQ certification body.

The fruit of this work and investment has led to excellent results that contribute to increased corporate sustainability. There have been many green initiatives undertaken in recent years, but one in particular has required exceptional effort. The company, in fact, has achieved an important result: **introduce the use of recycled plastic in the production of its professional cleaning machines and produce sustainable products without sacrificing the quality that has always distinguished G&W products.**



The EU Green Sheet is a technical document that accompanies the individual models of the Ghibli & Wirbel fleet. Inside you will find clear, up-to-date and reliable information on environmental performance.



The EU Green Sheet is an operational tool capable of responding quickly and comprehensively to the EU's strategic directions, such as EU Green Deal COM (2019) 640, the 'new action plan for the circular economy. For a cleaner and more competitive Europe' - COM(2020) 98) and Regulation (EU) 2020/852 'establishment of a framework to facilitate sustainable investment'.

It is your daily support in developing technical offers in public tenders and a valuable ally in commercial offers for private customers.

INDEX

4	GREEN PRO POWER WD 36 P: ENVIRONMENTAL HIGHLIGHTS
6	NORMATIVE REQUIREMENTS AND MACHINE CERTIFICATIONS - LIFE CYCLE FOCUS
7	SUPPLIERS AND RAW MATERIALS
8	DESIGN
12	PRODUCTION
13	USE PHASE
14	MAINTENANCE
15	END OF LIFE AND TIPS FOR PROPER DISPOSAL
16	RECYCLING
17	MAINTENANCE LOG
19	RESOURCES

GREEN PRO POWER WD 36 P: ENVIRONMENTAL HIGHLIGHTS

Medium capacity wet/dry vacuum cleaner equipped with a powerful and high efficiency new generation motor. Eco-friendly model made of regenerated, recyclable plastic. This model is equipped with the innovative UFS (Ultra Filtering System) which, thanks to the special polypropylene spacer ring, allows the cartridge filter (class M) to remain installed at all times, guaranteeing the best suction performance and maximum protection for the motor (even in the event of incorrect use by the operator). UFS is also practical: cleaning and maintenance of the float system, which is independent of the motor head and attached directly to the ring, is immediate, simple and intuitive. Equipped with accessory housings and exhaust air filter. Optional paper, HEPA cartridge, nylon and non-woven filters.

PRODUCT IDENTIFICATION

MODEL	CODE
GREEN PRO POWER WD 36 P	14517810500

- Green Pro Power WD 36 P consists of **25% recycled plastic**. Many hours of work, substantial investment in research and development, careful studies and specific field tests have enabled this important result to be achieved. The main objective was to make truly sustainable products while maintaining the quality and performance of standard machines. **This makes Green Pro Power WD 36 P in line with COM (2020) 98 'A new action plan for the circular economy. For a cleaner and more competitive Europe'.**
- Dry/wet vacuum cleaner characterised by low sound pressure (**60 dB(A)**). High performance and low noise make the Green Pro Power WD 36 P the ideal machine to work in any type of environment. **This feature makes Green Pro Power WD 36 P compliant with the Machinery Directive 2006/42/EC.**
- Two stages of filtration for best suction performance and maximum motor protection:
 - Class M cartridge filter, with a filtering capacity of up to 0.5 m², always installed due to the filter system professional Ultra Filtering System;
 - Cloth filter with a filtering capacity of up to 0.25 m². It allows the machine to be used without the aid of the bag thanks to the possibility of using the drum as a collection point for the sucked material. It is not washable but is easily cleaned with compressed air.
- Air outlet filter to trap dust particles and prevent them from being released back into the working environment.
- State-of-the-art, high-efficiency, reliable and durable motor, guaranteeing high levels of performance in all conditions.



GREEN PRO POWER WD 36 P: ENVIRONMENTAL HIGHLIGHTS



MADE IN ITALY



ITALIAN SUPPLY CHAIN 85%



NORMATIVE REQUIREMENTS AND MACHINE CERTIFICATIONS

GREEN PRO POWER WD 36 P, based on its design, type of construction and the version introduced to the market, complies with the basic safety and health requirements of the EC directives.

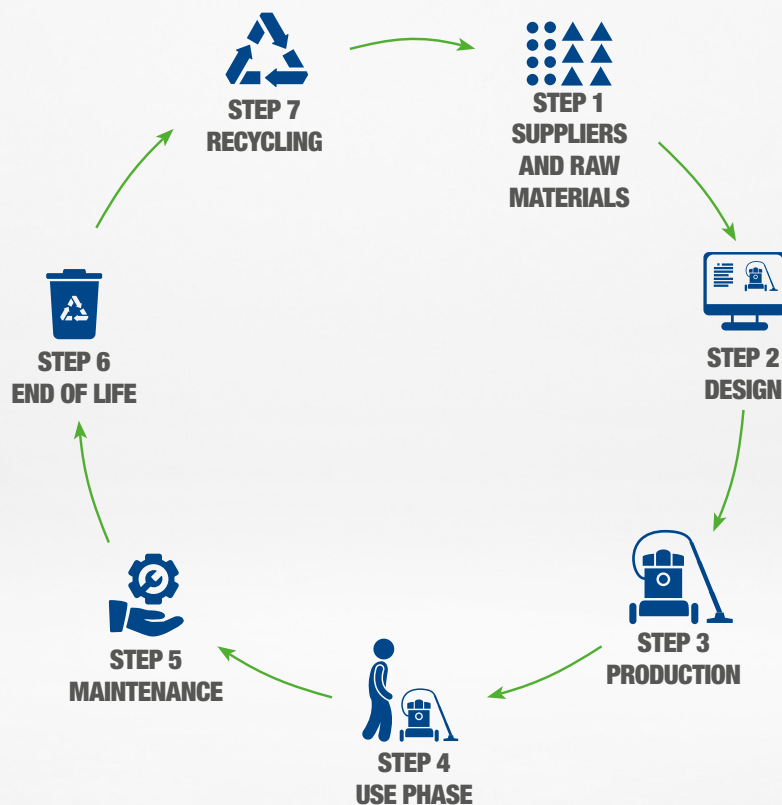


All products comply with the REACH Regulation (EC) No. 1907/2006, which concerns the registration, evaluation, authorisation and restriction of chemicals used in the production cycle, and the RoHS Directive 2011/65/EU and subsequent supplements, introduced to restrict the use of certain harmful and hazardous substances in electronic components.



LIFE CYCLE FOCUS

Ghibli & Wirbel continually invests to qualitatively and environmentally improve its fleet, consistent with EU environmental policies on eco-design (Ecodesign Directive 2009/125/EC, implementing regulations and Union action plan for the circular economy). A focus on all phases of a Ghibli & Wirbel machine's life cycle, from supplier selection to end-of-life.





STEP 1

SUPPLIERS AND RAW MATERIALS

Quality, Sustainability and Made in Italy are the core principles of Ghibli & Wirbel's procurement policy: a good percentage of suppliers (75%) have already adopted a quality (ISO 9001), environmental (ISO 14001) or occupational health and safety (ISO 45001) management system.

SUPPLY CHAIN GREEN PRO POWER WD 36 P

Average distance * 253 km

* The average distance of the main machine components is estimated from the weighted average of supply distances, taking weight % into account

RAW MATERIALS

The raw material use policy at Ghibli & Wirbel is geared towards favouring sustainable production models, consistent with the 'sustainable consumption and production' target defined by the United Nations within the 2030 Sustainable Development Agenda. A sustainable model that emphasises: high-quality and durable raw materials, recycled materials for parts with secondary functions (e.g. packaging or recycled plastic parts), end-of-life recyclability of materials in view of the circular economy, **as required by the 'new action plan for the circular economy. For a cleaner and more competitive Europe'- COM (2020) 98.**

There have been many green initiatives undertaken in recent years, but one in particular has required exceptional effort. The company, in fact, has achieved the goal of: **introducing the use of recycled plastic in the production of its professional cleaning machines** and making sustainable products without renouncing the quality that has always distinguished G&W products.

The recycled polymer is derived from plastic waste, post-consumer waste (bottles, films, automotive scrap, battery cases, flasks and other containers) and post-industrial waste (from plastic processing plants) that is controlled and certified.

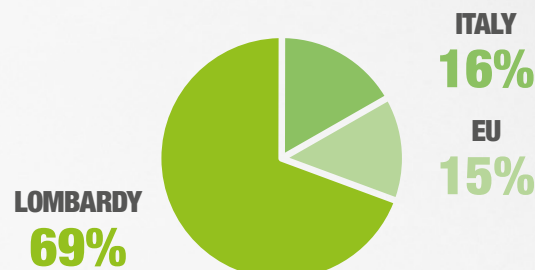
GREENPRO

designed by **ghibli & wirbel**

Designed by Ghibli & Wirbel, Green Pro is a complete range of machines with recycled plastics to meet all the needs of professionals. The cross-sectional and comprehensive offer demonstrates the company's focus on the needs of its customers. The main objective was to maintain the quality of the products and, for this reason, parts made from regenerated plastics were subjected to the same stress tests as traditional plastics. The amount of recycled plastic that has been used in the manufacture of these machines **exceeds 25%** and, for some components, **even reaches 100%**.

These features make the product compliant with the EU Green Deal COM (2019) 640 and the new action plan for the circular economy 'For a cleaner and more competitive Europe' -COM (2020) 98.

GEOGRAPHICAL DISTRIBUTION OF SUPPLIERS



GROSS WEIGHTS (KG) FOR COMPONENT TYPE

Electrical and electronic components	2.52 kg
Motors, electrical cables, electrical components	
Plastic	9.66 kg
- of which virgin plastic	7.26 kg
- of which recycled plastic	2.40 kg
Ferrous materials	0.84 kg
Frame, screws and various components	
Paper and Cardboard	2.20 kg
Box, instruction booklet, etc...	
More	
Other raw materials below the minimum detection threshold	2.28 kg
GREEN PRO POWER WD 36 P	17.50 kg
With accessories and packaging	
GREEN PRO POWER WD 36 P	15.30 kg
With accessories (without packaging)	
GREEN PRO POWER WD 36 P	12.20 kg
Without accessories and packaging	

MAIN MACHINE MATERIALS

(% BY WEIGHT)

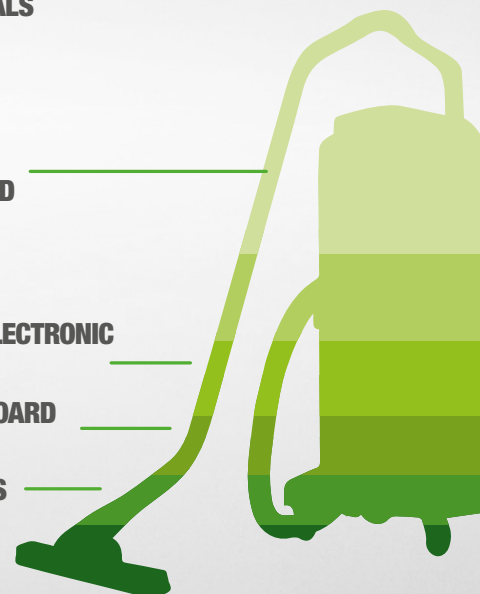
55% PLASTIC
OF WHICH 25% RECYCLED

14% ELECTRICAL AND ELECTRONIC COMPONENTS

13% PAPER AND CARDBOARD PACKAGING

5% FERROUS MATERIALS

13% OTHER



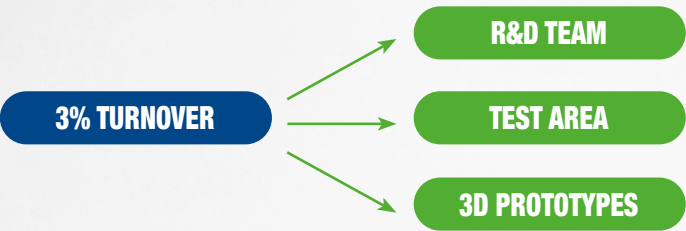


STEP 2
DESIGN

RESEARCH AND DEVELOPMENT

Quality and sustainability are the main objectives that Ghibli & Wirbel intends to pursue through its activities. Maintaining quality and sustainability is the reason why the company invests a substantial part of its resources in Research & Development every year. Our group of engineers, backed by cutting-edge technology, are constantly striving to perfect our current production and to plan tomorrow's. Innovative solutions are developed not only to continuously improve the functionality and ergonomics of Ghibli & Wirbel machines, but also to reduce noise, improve energy savings and make them more efficient, versatile and robust by using the most suitable materials and technologies. The entire production process is inspired by the best practices existing today to protect the environment. A 3D printer is also used to design and produce models of the machines produced by Ghibli & Wirbel.

INVESTMENT IN RESEARCH AND DEVELOPMENT



VACUUM CLEANERS

The entire family of robust, efficient and eco-friendly dry and dry-wet liquid vacuum cleaners retains its reliability. Thanks to an innovative moulding process, the addition of recycled plastic in no way compromises material properties or component quality. The selection of models is subjected to the highest possible stress on the materials that make up the casing and, more generally, on all structural plastic parts. In particular, the tank, which is the most delicate part as it is subjected to considerable stress during the suction phase, is tested for resistance at maximum vacuum for thousands of cycles and at varying temperatures. The integrity of all structural parts in which the recycled plastic is present is carefully checked and certified at the end of the test.

GUARANTEED DURABILITY

The design principle of Ghibli & Wirbel machines is to extend product life and durability. Machines designed to work for longer guarantee efficient use of their materials and reduced environmental impact.

GREEN PRO POWER WD 36 P

MOTOR SERVICE LIFE

Average motor life hours
900*

SUCTION TUBE LIFE

No. of hose bends
> 40.000**

*Self-declared data following test conducted in accordance with: IEC 60335-2-69

**Data declared by the supplier and validated by a third party according to: Regulations EU 666/2013 IEC 60312-1

The European Union (Regulation (EU) 666/2013, Annex 1) defines basic ecodesign specifications in terms of motor life, which must exceed 500 hours. The same applies to the suction hose, which must have a durability of more than 40,000 bends.



STEP 2 DESIGN

ERGONOMICS

Ghibli & Wirbel's sustainable design is consistent with the basic principles of ergonomics, i.e. the efficient relationship between: machine, operator and cleaning environment.

The most important requirement for determining the level of ergonomics is safety, followed by adaptability, usability, comfort, pleasantness, comprehensibility. Sustainability that is not only environmental, but also social through Ghibli & Wirbel's special focus on the operators and users of clean facilities.

ACCESSIBILITY AND SAFETY



Practical latches installed on the machine drum for quick and easy attachment and removal of the head.



Air outlet filter to trap dust particles and prevent them from being released back into the working environment.



Presence of a mousse under the machine handle to ensure a secure and ergonomic grip.

EASE OF USE AND EFFICIENCY



Telescopic 'S'-shaped extension, chrome-plated, which allows the accessory to adhere perfectly to the floor, guaranteeing the best suction performance, and the operator to work comfortably and without fatigue, even in the furthest, hardest-to-reach places.



Hose connection port at the front.



Front castors for smoother and more responsive movements and large diameter rear wheels.



Two stages of filtration for best suction performance and maximum motor protection:

- Class M cartridge filter, with a filtering capacity of up to 0.5 m², always installed with the professional Ultra Filtering System (UFS)
- Cloth filter with a filtering capacity of up to 0.25 m²



State-of-the-art, high-efficiency, reliable and durable motor that guarantees high performance in all conditions.



10 metre long power cable.



Suction hose 2.5m long



Presence of cable hooks and specific slots for storing accessories for the operator's convenience and freedom of movement.



STEP 2 DESIGN

WIDE RANGE OF ACCESSORIES TO FACILITATE USE OF THE MACHINE IN ALL ENVIRONMENTS

The standard equipment designed by Ghibli & Wirbel for its machines is as complete as possible in terms of efficiency and economy to cope with the most common applications.

8 ACCESSORIES (in standard configuration) to cover the main cleaning requirements.

STANDARD ACCESSORIES



FLEXIBLE HOSE Ø 40 MM

Able to guarantee maximum convenience and ease of use thanks to its 2.5 m length.



TELESCOPIC TUBE Ø 40 MM

'S'-shaped, made of chrome-plated steel, to allow the machine to cover a much larger working area. Maximum length of 1m.



DUST FLOOR NOZZLE Ø 40 MM

Suitable for treating hard surfaces.



LIQUID FLOOR NOZZLE Ø 40 MM

With rubber inserts that are easy to remove, clean and replace.



BRUSH Ø 40 MM

With bristles for removing dirt even in the smallest spaces.



CREVICE TOOL Ø 40 MM

It allows suction in even the hardest to reach places.



CLOTH FILTER

Filtration class L, i.e. made of a material designed to capture up to 99% of dirt particles. Filtering capacity up to 0.5 m².



PTFE CARTRIDGE FILTER

It prevents dirt from accumulating on its walls, allowing it to be cleaned immediately. Moisture-resistant and washable (for a longer service life than standard filters). Filtration class M, always installed thanks to the UFS system and made of a material designed to capture up to 99.9% of dirt particles. Filtering surface area up to 0.5 m².



STEP 2 DESIGN

OPTIONAL ACCESSORIES

Ghibli & Wirbel's optional accessories allow even the most specific requirements to be met in a timely manner.

In particular, the following optional accessories are available for the Green Pro Power WD 36 P:



CARPET TOOL Ø 40 MM

For vacuuming carpets and textile surfaces.



PVC EXTENSION CORD 0.5 M

Convenient extension that allows the machine to cover a larger working area.



ANTI-FOAM DEVICE

When sucking in liquids, it protects the float and motor from foaming.



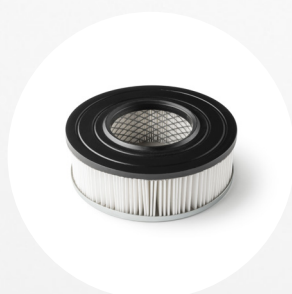
NYLON FILTER

Used as an additional protection to the cloth filter, it allows dust to slide off, thus keeping the cloth filter clean for longer. Filtering surface area up to 0.46 m².



NYLON PROTECTION FILTER

Used as additional protection for the motor.



HEPA CARTRIDGE FILTER

Composed of H14 filter capacity material, designed to capture at least 99.995% of particles as small as 0.3 microns. Filtering surface area up to 0.5 m². It provides even better performance in terms of filtration and dust re-entry.



PAPER BAG

Up to 16 l capacity.
Pack of 10 pieces.



NON-WOVEN FILTER

Can be used to suck up both liquid and dusty material. Washable.



EASY FILTER REPLACEMENT AND BAG EMPTYING

Accessing and replacing the air re-entry filter is easy and intuitive.

Ghibli & Wirbel suggests checking the condition of filters frequently and replacing them every 6 months. The frequency of replacement is closely related to the type of environment and levels of soiling.



STEP 3 PRODUCTION

The company, which has been ISO 9001 certified since 1995 (Quality Management System), strives to ensure a safe and healthy working environment and to be an environmentally responsible organisation. To this end, it has started the process of obtaining ISO 14001 (Environmental Management System Certification) and SA 8000 (Social Accountability) certification with the CSQ certification body. Ghibli & Wirbel is also committed to constantly reducing energy and water consumption, using less paper and fuel, reducing noise in all its forms, and keeping waste production as low as possible. The entire production process is inspired by the best practices existing today to protect the environment. In the year 2022, 91,580 Ghibli & Wirbel machines were produced. In 2023, a 750 kW photovoltaic system was installed at the production site to cover 50% of the company's electricity consumption needs, thus the company makes a contribution to climate mitigation as stipulated in Art. 12 of Regulation (EU) 2020/852.

100% of the machines are tested with an end-of-line test that verifies the functionality of the product. In addition to this testing, there is a quality audit based on a statistical check in which the various characteristics are rechecked. The machines are designed and manufactured in such a way as to favour the longest possible service life and the recycling at end-of-life* of the various materials of which they are composed.

GHIBLI & WIRBEL

Ghibli & Wirbel, the brand that was born from the merging of two Italian excellences in professional cleaning, promotes the values of Italian entrepreneurship, passion for work and the quality of Made in Italy unaltered.

The products are designed and manufactured entirely in the production plant in Dorno (Pavia).

To gain complete control over its production cycle, Ghibli & Wirbel manufactures most of the components of the machines it assembles in-house. Each mould is the result of meticulous prototyping. Production is carried out on injection moulding machines. Processing is carried out on automatic moulding lines: a complete cycle that leaves only the last stage of inspection to specialised personnel. Ghibli & Wirbel operates production lines divided by product:

- 2 lines for the assembly of vacuum cleaners, dry-wet vacuum cleaners and spray-extraction cleaners
- 1 assembly line for industrial vacuum cleaners
- 1 single disc machine assembly line
- 4 assembly lines for scrubber-dryers
- 1 assembly line for other product families



* This is in line with the 'new action plan for the circular economy. For a cleaner and more competitive Europe' - COM (2020) 98.





STEP 4 USE PHASE

GENERAL SPECIFICATIONS		
Manufacturer	Ghibli & Wirbel SpA Via Enrico Fermi, 43 Verona (VR)	
Place of manufacture	Dorno (PV) - Italy	
Function	Dry Vacuum Cleaners - Wet Vacuum Cleaners	
Maximum power (W)	1250	●
Rated power (W)	1100	●
Power supply	Electric	●
Weight (kg)	12,2	●
Tank capacity (l)	36	●
Usable capacity (l)	25	●
FILTERS AND SUCTION EFFICIENCY		
Standard filters	Cloth filter (class L) + PTFE cartridge filter (class M)	●
Filter replacement frequency (months)	6 *	●
Filter bag capacity (l)	16	●
Air flow rate (l/s)	71	●
Vacuum (mbar)	235	●
ENERGY EFFICIENCY		
Energy consumption per m ² (Wh/m ²)	2,59 *	
CO ₂ EMISSIONS		
CO ₂ emissions per m ² (gCO ₂ e/m ²)	0,86 ***	
NOISE		
Sound power (dB)	< 80	●
Sound pressure [dB(A)]	60**	●
OTHER SPECIFICATIONS		
Power cable length (m)	10	●
Suction hose length (m)	2,5	●
Average motor life hours	900	●
No. hose bends	> 40000	●

* Data dependent on type of use and level of soiling of the environment.

** Complies with the Machinery Directive 2006/42/EC

*** Considering only the use phase and thus the energy consumed per square metre (Emission Factor)

Each dot corresponds to the accreditation level of the data:

● Self-declared ● External laboratory test ● Declared by supplier



STEP 5 MAINTENANCE

The maintenance plan* of the machines guarantees high operating efficiencies and high performance qualities over time, which means reduced consumption and, consequently, reduced environmental impacts generated by machine use.

Ghibli & Wirbel recommends that regular maintenance work be carried out in strict accordance with the 'Use and Maintenance' booklet*. Where possible, pick specialised and authorised companies and record work in the periodic maintenance booklet. In the maintenance booklet, the coupons and interventions carried out on the machines must be recorded and initialled. It is a tool for keeping your fleet under control and for demonstrating to your customers that regular interventions have been carried out. Attention to the customer and to the quality of the cleaning service provided can also be demonstrated by keeping cleaning machines and equipment in full working order.

Ghibli & Wirbel suggests you use the log provided on the last page of this Eu Green Sheet to validate and justify your interventions. You can detach it and file it in your site documentation.

Scheduled maintenance diagrams are shown below. The indicated frequencies may vary depending on particular working conditions, to be defined by the maintenance manager.

SCHEDULED MAINTENANCE DIAGRAM

PROCEDURE	DAILY after the machine is used	PERIODIC
Checking and cleaning cloth filter	●	
Cleaning the appliance	●	
Cartridge filter cleaning		●
Air outlet filter check		●
Float functionality check		●

*This procedure is in line with the 'new action plan for the circular economy. For a cleaner and more competitive Europe'- COM (2020) 98.





STEP 6

END OF LIFE AND TIPS FOR PROPER DISPOSAL

Environmentally friendly design also pays attention to end-of-life management, although Ghibli & Wirbel machines are designed for an extended life cycle*. In line with the 'new action plan for the circular economy. For a cleaner and more competitive Europe' - COM (2020) 98 the principles of disassembly and recyclability are applied and guaranteed.

The machines are designed and manufactured in such a way as to favour the longest possible service life and the recycling at end-of-life* of the various materials of which they are composed.

END-OF-LIFE MACHINE DISPOSAL MODE

The machine must be handed over entirely as WEEE. For the disposal of this equipment, reference must be made to the European WEEE Directive 2012/19/EU and any national regulations adopted by each individual European country. The materials are all recyclable*, although some parts of the machinery will have to be disposed of as special waste due to their specific function of use. Different materials must be easily separable. Parts subject to wear, damage or malfunctioning must be removable and replaceable. Plastic parts must be marked with the coding of the type of polymer they are made of according to DIN 7728 and 16780 and UNI EN ISO 1043/1.

PACKAGING DISPOSAL METHODS

Corrugated cardboard packaging complies with European Directive 94/62 EC on packaging and packaging waste. Corrugated cardboard is 100% recyclable and must be disposed of according to the separate collection procedures established by the local authority.

As far as plastic film is concerned, it too complies with the requirements of the European Packaging and Packaging Waste Directive 94/62/EC. Plastic packaging should be delivered in accordance with the separate collection procedures established by the local authority.

On the other hand, the tertiary packaging (pallets) used for transporting the machines are taken back by a specialised company and reused, thus avoiding the generation of waste.

CONSUMABLES DISPOSAL METHOD

Wear parts, such as tubes, wheels, filters, etc., are removable and replaceable*. They must also be disposed of at the end of their life in accordance with environmental regulations. Those authorised for periodic maintenance will be properly informed and trained on how best to handle them.

*This procedure is in line with the 'new action plan for the circular economy. For a cleaner and more competitive Europe' - COM (2020) 98.





STEP 7 RECYCLING

The policy on the use of raw materials is geared towards favouring production models consistent with Goal 12 - **Ensure sustainable production and consumption patterns** - defined by the United Nations 2030 Agenda.

A sustainable pattern that promotes: high quality and durable raw materials, recycled materials (e.g. packaging and recycled plastic parts of machines), end-of-life recyclability of materials in a circular economy perspective.



Attention is paid to all stages of the life cycle of a Ghibli & Wirbel machine, from the selection of raw material suppliers and components to the end of the product's life.

Following the introduction of recycled plastic in this process, the focus on the production cycle has increased further. Ghibli & Wirbel's main objective, to manufacture more sustainable machines, was only achieved when it was possible to **guarantee the same quality as the products in the standard range**. Numerous tests were carried out to verify and certify that the recycled plastic components of the various machines meet the technical requirements and guarantee excellent performance.

All plastics used are recyclable and are marked to make the type of plastic present immediately recognisable and facilitate recycling.

Most production waste is reprocessed and used to make new components and accessories.



RESPECT FOR THE ENVIRONMENT

by reducing the use of virgin plastic in favour of recycled.



REDUCTION OF WASTE

thanks to the greater care that is taken in production and, more generally, in the entire product life cycle.



**If on board

RESOURCES

Ghibli & Wirbel makes all machine-specific documentation, including this EU Green Sheet, available on its website (www.ghibliwirbel.com) and on its MyG&W reserved area.

- Data sheet
- Use and maintenance
- EC Declaration of Conformity
- Warnings and safety
- Wiring diagram
- Troubleshooting
- Machine brochure
- Machine presentation

CONTACT

For more information write to: green@ghibliwirbel.com

GHIBLI & WIRBEL SpA

Registered office
Via Enrico Fermi, 43
37136 Verona (VR) - Italy

Operations and production site
Via Circonvallazione, 5
27020 Dorno (PV) - Italy

www.ghibliwirbel.com

Tel +39.0382.848811
Fax +39.0382.84668
Email info@ghibliwirbel.com

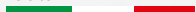
VAT 03976160287



GoinGreen

Ghibli & Wirbel Sustainable Vision

100% MADE IN ITALY



Registered office

Via Enrico Fermi, 43 - 37136 VERONA (VR) - Italy

Operational Headquarters

Via Circonvallazione, 5 - 27020 Dorno (PV) - Italy

P. +39 0382 848811 - F.+39 0382 84668 - M. info@ghibliwirbel.com

www.ghibliwirbel.com



ISO 9001

