

GREENPRO

designed by ghibli & wirbel

SB 143 L 10



GoinGreen
Ghibli & Wirbel Sustainable Vision

EU green
sheet 

COMMITMENT TO THE ENVIRONMENT

The focus on environmental protection and pollution reduction is an issue of global interest. The Planet's resources are not infinite and, for this reason, must be preserved carefully, without waste, respecting ecosystems and biodiversity. This awareness leads to the need to make even **economic growth more sustainable and environmentally friendly**.

Ghibli & Wirbel makes a daily and concrete commitment to becoming an increasingly sustainable company. This important change is represented and told through the new GoinGreen symbol. In fact, the company has embarked on a path towards sustainability that will be increasingly enriched by projects related to this issue in the coming years. In this new symbol, the colours of the institutional logo, yellow and blue, icons of Ghibli & Wirbel's quality and reliability, blend to form the colour green, an emblem of the initiatives undertaken to protect the environment. Whereas the pinwheel represents the future and expresses a fundamental concept: the time has come to take action to ensure a better tomorrow for future generations.



GoinGreen
Ghibli & Wirbel Sustainable Vision

The company, certified ISO 9001 since 1995 (Quality Management System), strives to ensure safe and healthy working environments and to be an environmentally responsible organisation. Ghibli & Wirbel is also dedicated to constantly reducing energy and water consumption, using less paper and fuel, reducing noise in all its forms, and keeping waste production as low as possible. The entire production process applies **principles of environmental and social sustainability**: the company has started the process to obtain ISO 14001 (Environmental Management System Certification) and SA 8000 (Social Accountability) certification with the CSQ certification body.

The fruit of this work and investment has led to excellent results that contribute to increased corporate sustainability. There have been many green initiatives undertaken in recent years, but one in particular has required exceptional effort. The company, in fact, has achieved an important result: **introduce the use of recycled plastic in the production of its professional cleaning machines and produce sustainable products without sacrificing the quality that has always distinguished G&W products.**



The EU Green Sheet is a technical document that accompanies the individual models of the Ghibli & Wirbel fleet. Inside you will find clear, up-to-date and reliable information on environmental performance.



The EU Green Sheet is an operational tool capable of responding quickly and comprehensively to the EU's strategic directions, such as EU Green Deal COM (2019) 640, the 'new action plan for the circular economy. For a cleaner and more competitive Europe' - COM(2020) 98) and Regulation (EU) 2020/852 'establishment of a framework to facilitate sustainable investment'.

It is your daily support in developing technical offers in public tenders and a valuable ally in commercial offers for private customers.

INDEX

4	GREEN PRO SB 143 L 10: ENVIRONMENTAL HIGHLIGHTS
6	NORMATIVE REQUIREMENTS AND MACHINE CERTIFICATIONS - LIFE CYCLE FOCUS
7	SUPPLIERS AND RAW MATERIALS
8	DESIGN
11	PRODUCTION
12	USE PHASE
13	MAINTENANCE
14	END OF LIFE AND TIPS FOR PROPER DISPOSAL
15	RECYCLING
16	ANNEX 1 - CB TEST CERTIFICATE
18	RESOURCES
19	MAINTENANCE LOG

GREEN PRO SB 143 L 10: ENVIRONMENTAL HIGHLIGHTS

Agile and versatile single disc machine with working width of 430 mm, the effective combination of motor – weight – speed, makes this machine suitable for any cleaning and restoration task. Ecofriendly model made of regenerated plastic material and subjected to stringent endurance tests to guarantee the same quality and reliability as the standard model. Equipped with very strong induction motor for long life and great performances. Double protection against unintentional start-up and transmission equipped with a planetary and satellite gearbox guaranteeing the best performance in terms of power, durability and silence. Latest-generation handle that perfectly combines ergonomics, robustness, safety and innovative design.

PRODUCT IDENTIFICATION

MODEL

GREEN PRO SB 143 L 10

CODE

00-183EL-GH-70

- Green Pro SB 143 L 10 consists of **27% recycled plastic**. Many hours of work, substantial investment in research and development, careful studies and specific field tests have enabled this important result to be achieved. The main objective was to make sustainable products while maintaining the quality and performance of standard machines. **This makes Green Pro SB 143 L 10 compliant with COM (2020) 98 'A new action plan for the circular economy. For a cleaner and more competitive Europe'.**
- Single disc machine characterised by low sound pressure (**54 dB(A)**). High performance and low noise make Green Pro SB 143 L 10 the ideal machine for working in any type of environment. **This feature makes Green Pro SB 143 L 10 compliant with the Machinery Directive 2006/42/EC.**
- Detergent solution tank (optional) with a capacity of 12 litres that allows great autonomy. Easy to remove (no tools required) to reduce working time. Equipped with a graduated scale for liquid level and to facilitate water-detergent mixing. Handle equipped with levers to **adjust the flow of the solution** in the tank according to the type of work, optimising its use and avoiding water wastage.
- Splash guards (optional) to prevent water wastage during work sessions and, at the same time, prevent water and dirt from damaging the work areas.
- Complete suction unit (optional) for dust collection consisting of suction unit and crownwheel with hoses to be attached to the machine in order to work with as little dust as possible, e.g. when using the machine for specific treatments with the presence of a lot of dust such as sanding wood, cement, etc.



GREEN PRO SB 143 L 10: ENVIRONMENTAL HIGHLIGHTS



MADE IN ITALY



100% ITALIAN SUPPLY CHAIN



NORMATIVE REQUIREMENTS AND MACHINE CERTIFICATIONS

The Green Pro SB 143 L 10 single disc machine, based on its design, type of construction and the version introduced to the market, complies with the basic health and safety requirements of the EC directives.



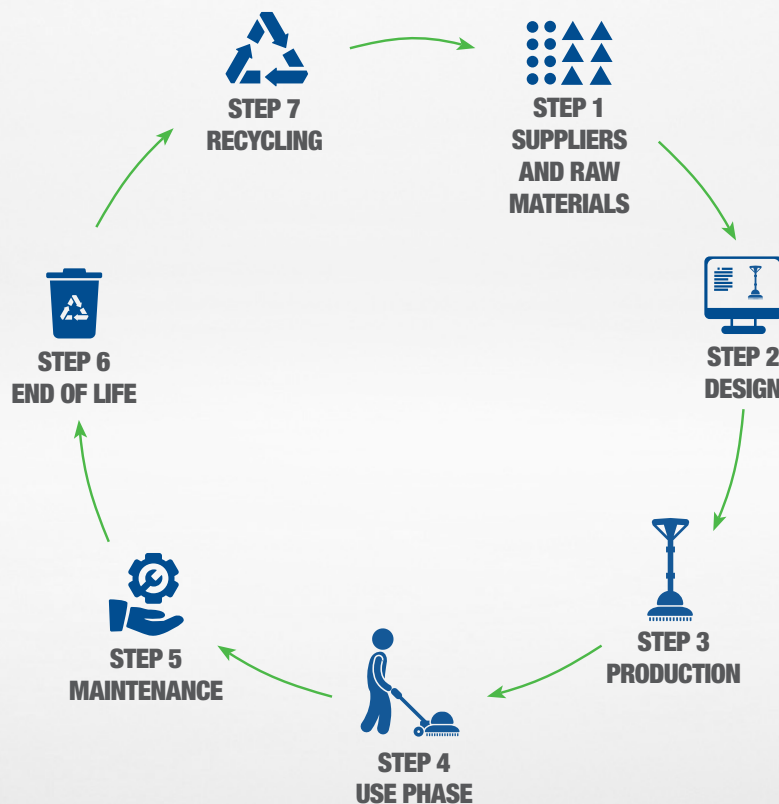
All products comply with the REACH Regulation (EC) No. 1907/2006, which concerns the registration, evaluation, authorisation and restriction of chemicals used in the production cycle, and the RoHS Directive 2011/65/EU and subsequent supplements, introduced to restrict the use of certain harmful and hazardous substances in electronic components.

In addition, the machine is in possession of the CB Test Certificate (see Annex 1 page 16). As part of the IECEE CB Certification System (worldwide system), CB certificates are issued to certify that an electrical/electronic product complies with IEC standards. The CB Test Certificate serves as a basis for obtaining national quality seals in participating countries. There are more than 50 national certification bodies in the CB System and they are located all over the world.



LIFE CYCLE FOCUS

Ghibli & Wirbel continually invests to qualitatively and environmentally improve its fleet, consistent with EU environmental policies on eco-design (Ecodesign Directive 2009/125/EC, implementing regulations and Union action plan for the Circular Economy). A focus on all phases of a Ghibli & Wirbel machine's life cycle, from supplier selection to end-of-life.





STEP 1

SUPPLIERS AND RAW MATERIALS

Quality, Sustainability and Made in Italy are the core principles of Ghibli & Wirbel's procurement policy: a good percentage of suppliers (75%) have already adopted a quality (ISO 9001), environmental (ISO 14001) or occupational health and safety (ISO 45001) management system.

SUPPLY CHAIN GREEN PRO SB 143 L 10

Average distance * 133 km

* The average distance of the main machine components is estimated from the weighted average of supply distances, taking weight % into account

RAW MATERIALS

The raw material use policy at Ghibli & Wirbel is geared towards favouring sustainable production models, consistent with the 'sustainable consumption and production' target defined by the United Nations within the 2030 Sustainable Development Agenda. A sustainable model that emphasises: high-quality and durable raw materials, recycled materials for parts with secondary functions (e.g. packaging or recycled plastic parts), end-of-life recyclability of materials in view of the circular economy, **as required by the 'new action plan for the circular economy. For a cleaner and more competitive Europe'- COM (2020) 98.**

There have been many green initiatives undertaken in recent years, but one in particular has required exceptional effort. The company, in fact, has achieved the goal of: **introducing the use of recycled plastic in the production of its professional cleaning machines** and making sustainable products without renouncing the quality that has always distinguished G&W products.

The recycled polymer is derived from plastic waste, post-consumer waste (bottles, films, automotive scrap, battery cases, flasks and other containers) and post-industrial waste (from plastic processing plants) that is controlled and certified.

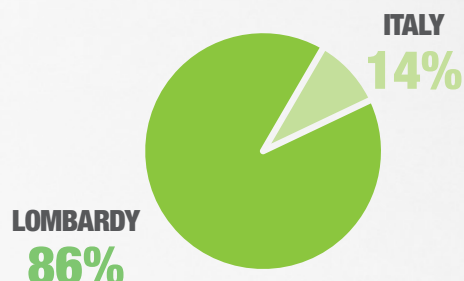
GREENPRO

designed by **ghibli & wirbel**

Designed by Ghibli & Wirbel, Green Pro is a complete range of machines with recycled plastics to meet all the needs of professionals. The cross-sectional and comprehensive offer demonstrates the company's focus on the needs of its customers. The main objective was to maintain the quality of the products and, for this reason, parts made from regenerated plastics were subjected to the same stress tests as traditional plastics. The amount of recycled plastic that has been used in the manufacture of these machines **exceeds 25%** and, for some components, **even reaches 100%**.

These features make the product compliant with the EU Green Deal COM (2019) 640 and the new action plan for the circular economy 'For a cleaner and more competitive Europe' -COM (2020) 98.

GEOGRAPHICAL DISTRIBUTION OF SUPPLIERS



GROSS WEIGHTS (KG) FOR COMPONENT TYPE

Electrical and electronic components	18.73 kg
Motors, electrical cables, electrical components	
Plastic	3.88 kg
Shell, tubes, standard accessories, packaging, etc.	
- of which virgin plastic	2.85 kg
- of which recycled plastic	1.03 kg
Aluminium	2.22 kg
Motor cover, crankcase, etc.	
Ferrous materials	13.50 kg
Frame, screws, and various components	
Paper and Cardboard	3.87 kg
Box, instruction booklet, etc.	
Pallet	0.50 kg
More	0.57 kg
Other raw materials below the minimum detection threshold	
GREEN PRO SB 143 L 10	43.27 kg
With packaging	
GREEN PRO SB 143 L 10	38.90 kg
Without packaging	

MAIN MACHINE MATERIALS
(% BY WEIGHT)

43% ELECTRICAL AND ELECTRONIC COMPONENTS

31% FERROUS MATERIALS

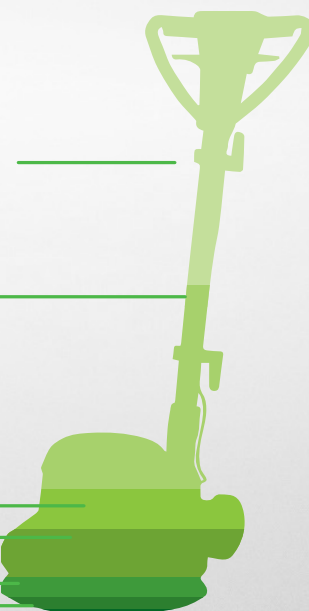
9% PLASTIC
OF WHICH 27% RECYCLED

9% PACKAGING

5% ALUMINIUM

1% PALLET

2% OTHER



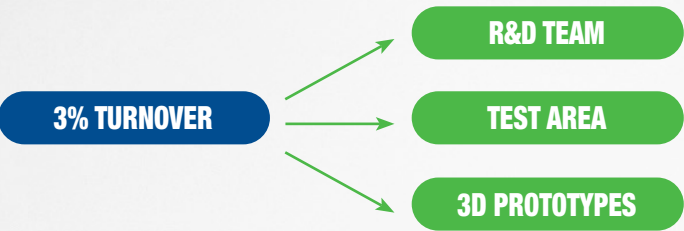


STEP 2
DESIGN

RESEARCH AND DEVELOPMENT

Quality and sustainability are the main objectives that Ghibli & Wirbel intends to pursue through its activities. Maintaining quality and sustainability is the reason why the company invests a substantial part of its resources in Research & Development every year. Our group of engineers, backed by cutting-edge technology, are constantly striving to perfect our current production and to plan tomorrow's. Innovative solutions are developed not only to continuously improve the functionality and ergonomics of Ghibli & Wirbel machines, but also to reduce noise, improve energy savings and make them more efficient, versatile and robust by using the most suitable materials and technologies. The entire production process is inspired by the best practices existing today to protect the environment. A 3D printer is also used to design and produce models of the machines produced by Ghibli & Wirbel.

INVESTMENT IN RESEARCH AND DEVELOPMENT



SINGLE DISCS

The GreenPro single-disc range consists of two models with a green formula that do not give up their typical robustness, ergonomics and safety. A choice designed to meet all the needs of the sector's specialists, thanks to an agile and versatile single disc machine and a professional high-speed polishing machine in which the combination of weight, speed and motor allows it to adapt to any cleaning task. Both models are subjected to a series of endurance tests at maximum work load and extreme operating temperature for many hours and several days in a row. Upon completion of the tests, the recycled plastic components are carefully examined and subjected to dimensional and structural checks.

GUARANTEED DURABILITY

The design principle of Ghibli & Wirbel machines is to extend product life and durability. Machines designed to work for longer guarantee efficient use of their materials and reduced environmental impact.

GREEN PRO SB 143 L 10

MOTOR SERVICE LIFE

ON-OFF CYCLES	> 50.000*
---------------	-----------

*Externally certified laboratory test in accordance with: IEC 60335-1 and IEC 60335-2-67



STEP 2 DESIGN

ERGONOMICS

Ghibli & Wirbel's sustainable design is consistent with the basic principles of ergonomics, i.e. the efficient relationship between: machine, operator and cleaning environment. The most important requirement for determining the level of ergonomics is safety, followed by adaptability, usability, comfort, pleasantness, comprehensibility. Sustainability that is not only environmental, but also social through Ghibli & Wirbel's special focus on the operators and users of clean facilities.

ACCESSIBILITY AND SAFETY



Elliptical handle for greater stability and strength, providing a greater grip on the machine. Presence of safety switch, cable hook.



Handle with joint system to allow better height adjustment. Protection of the handle joint against water for safe working at all times.



The rubberized material on the handle makes the grip more effective. The very shape of the handle protects the hands from accidental impacts. Automatic stop when the safety levers in the handle are released.



Safety system (with balls) in the handle that prevents the machine from starting with the handle upright. Soft rubber inserts for better grip, you can work with one hand without the machine stopping. Durable plastic handle for long life.



The motor is mounted in the middle and the machine is very stable and easy to operate. The work is not tiring, even for prolonged periods. Thanks to the satellite and planetary gearbox (no belt), the machine is robust, quieter, long-lasting, durable and very stable. The possibility of transmitting high torques directly on the shaft reduces vibrations and makes the machine more stable.



Presence of bumper protecting the machine, walls and working environment.



Complete suction unit (optional) for dust collection consisting of suction unit and crownwheel with hoses to be attached to the machine in order to work with as little dust as possible, e.g. when using the machine for specific treatments with the presence of a lot of dust such as sanding wood, cement, etc.

EASE OF USE AND EFFICIENCY



Handle equipped with levers for adjusting the flow of detergent solution, handle height adjustment and on/off switch.



Detergent solution tank (optional) with a capacity of 12 litres that allows great autonomy. Easy to remove (no tools required) to reduce working time. Equipped with a graduated scale for liquid level and to facilitate water-detergent mixing. Large opening for easy filling (also with bucket).



Splash guards (optional) to prevent water wastage during work sessions and, at the same time, prevent water and dirt from damaging the work areas.



The system for attaching accessories (pads, brushes, discs, etc.) to the machine is easy and requires no tools. All Ghibli & Wirbel accessories are equipped with this coupling system.



Large diameter, non-marking plastic wheels for easy transport.



12 m cable length for large machine range of action



Cable hooks allow them to be securely housed. To unwind, simply rotate the hooks themselves. They can also serve as accessory holders as they can be adjusted in height (e.g. to mount the tank, dust collection system), without the use of any tools.



STEP 2 DESIGN

WIDE RANGE OF OPTIONAL ACCESSORIES TO FACILITATE MACHINE USE IN ALL ENVIRONMENTS

Ghibli & Wirbel's optional accessories allow even the most specific requirements to be met in a timely manner. In particular, the following optional accessories are available for the Green Pro SB 143 L 10:



17" PAD HOLDER

For the use of different types of pads with a diameter of 430 mm and to carry out different surface treatments



WASH BRUSH 17"

With 0.6 mm bristles. Medium hardness, suitable for washing all kinds of surfaces.



CARPET TOOL 17"

Suitable for washing textile surfaces such as carpets and rugs.



ABRASIVE BRUSH TYNEX 17"

For aggressive treatments even on uneven surfaces.



16" PAD HOLDER

For abrasive paper pads to use for wood sanding.



12 L TANK

Large capacity for extended autonomy, easy to install (no tools required) and remove. Equipped with a graduated scale to dose the liquid level and to facilitate water-detergent mixing.



ADDITIONAL WEIGHT 10 KG - 17"

It increases the weight on the surface to be treated, thus increasing the intensity of the work. Easily installed and removed without tools.



STEP 3 PRODUCTION

The company, which has been ISO 9001 certified since 1995 (Quality Management System), strives to ensure a safe and healthy working environment and to be an environmentally responsible organisation. To this end, it has started the process of obtaining ISO 14001 (Environmental Management System Certification) and SA 8000 (Social Accountability) certification with the CSQ certification body. Ghibli & Wirbel is also committed to constantly reducing energy and water consumption, using less paper and fuel, reducing noise in all its forms, and keeping waste production as low as possible. The entire production process is inspired by the best practices existing today to protect the environment. In the year 2022, 91,580 Ghibli & Wirbel machines were produced. In 2023, a 750 kW photovoltaic system was installed at the production site to cover 50% of the company's electricity consumption needs, thus the company makes a contribution to climate mitigation as stipulated in Art. 12 of Regulation (EU) 2020/852.

100% of the machines are tested with an end-of-line test that verifies the functionality of the product. In addition to this testing, there is a quality audit based on a statistical check in which the various characteristics are rechecked. The machines are designed and manufactured in such a way as to favour the longest possible service life and the recycling at end-of-life* of the various materials of which they are composed.

GHIBLI & WIRBEL

Ghibli & Wirbel, the brand that was born from the merging of two Italian excellences in professional cleaning, promotes the values of Italian entrepreneurship, passion for work and the quality of Made in Italy unaltered.

The products are designed and manufactured entirely in the production plant in Dorno (Pavia).

To gain complete control over its production cycle, Ghibli & Wirbel manufactures most of the components of the machines it assembles in-house. Each mould is the result of meticulous prototyping. Production is carried out on injection moulding machines. Processing is carried out on automatic moulding lines: a complete cycle that leaves only the last stage of inspection to specialised personnel. Ghibli & Wirbel operates production lines divided by product:

- 2 lines for the assembly of vacuum cleaners, dry-wet vacuum cleaners and spray-extraction cleaners
- 1 assembly line for industrial vacuum cleaners
- 1 single disc machine assembly line
- 4 assembly lines for scrubber-dryers
- 1 assembly line for other product families



* This is in line with the 'new action plan for the circular economy. For a cleaner and more competitive Europe' - COM (2020) 98.





STEP 4 USE PHASE

GENERAL SPECIFICATIONS		
Manufacturer	Ghibli & WIRBEL SpA Via Enrico Fermi, 43 Verona (VR)	
Place of manufacture	Dorno (PV) - Italy	
Function	Single disc machine	
Rated power (W)	1000	●
Power supply	Electric	●
Weight (kg)	38,90	●
Tank (l)	12	●
Brush speed (rpm)	154	●
Vacuum system for dust collection	Present (optional)	●
ENERGY EFFICIENCY		
Energy consumption per m ² (Wh/m ²)	4,95 *	●
CO ₂ EMISSIONS		
CO ₂ emissions per m ² (gCO ₂ e/m ²)	1,65 ***	●
NOISE		
Sound power (dB)	< 70 **	●
Sound pressure [dB(A)]	< 54 **	●
OTHER SPECIFICATIONS		
Motor life	single-phase induction motor, no electrical elements subject to consumption	●
Cable length (m)	12	●
Brush pressure (g/cm ²)	40,3	●

* Data dependent on type of use and level of soiling of the environment.

** Complies with the Machinery Directive 2006/42/EC

*** Considering only the use phase and thus the energy consumed per square metre (Emission Factor)

Each dot corresponds to the accreditation level of the data:

● Self-declared ● External laboratory test ● Declared by supplier



STEP 5 MAINTENANCE

The maintenance plan* of the machines guarantees high operating efficiencies and high performance qualities over time, which means reduced consumption and, consequently, reduced environmental impacts generated by machine use.

Ghibli & Wirbel recommends that regular maintenance work be carried out in strict accordance with the 'Operation and Maintenance' booklet* (see resources section of the EU Green Sheet). Where possible, pick specialised and authorised companies and record work in the periodic maintenance booklet. In the maintenance booklet, the coupons and interventions carried out on the machines must be recorded and initialled. It is a tool for keeping your fleet under control and for demonstrating to your customers that regular interventions have been carried out. Attention to the customer and to the quality of the cleaning service provided can also be demonstrated by keeping cleaning machines and equipment in full working order.

For the validation and justification of interventions Ghibli & Wirbel suggests you use the logbook provided on the last page of this EU Green Sheet. You can detach it and file it in your site documentation.

Scheduled maintenance diagrams are shown below. The indicated frequencies may vary depending on particular working conditions, to be defined by the maintenance manager.

SCHEDULED MAINTENANCE DIAGRAM

PROCEDURE	DAILY after the machine is used	WEEKLY
Cleaning the machine	●	
Emptying and cleaning the tank (if any)	●	
Brush replacement		●
Pad holder replacement		●

*This procedure is in line with the 'new action plan for the circular economy. For a cleaner and more competitive Europe'- COM (2020) 98.





STEP 6

END OF LIFE AND TIPS FOR PROPER DISPOSAL

Environmentally friendly design also pays attention to end-of-life management, although Ghibli & Wirbel machines are designed for an extended life cycle*. In line with the 'new action plan for the circular economy. For a cleaner and more competitive Europe'- COM (2020) 98 the principles of disassembly and recyclability are applied and guaranteed.

The machines are designed and manufactured in such a way as to favour the longest possible service life and the recycling at end-of-life* of the various materials of which they are composed.

END-OF-LIFE MACHINE DISPOSAL MODE

The machine must be handed over entirely as WEEE. For the disposal of this equipment, reference must be made to the European WEEE Directive 2012/19/EU and any national regulations adopted by each individual European country. The materials are all recyclable*, although some parts of the machinery will have to be disposed of as special waste due to their specific function of use. Different materials must be easily separable. Parts subject to wear, damage or malfunctioning must be removable and replaceable. Plastic parts must be marked with the coding of the type of polymer they are made of according to DIN 7728 and 16780 and UNI EN ISO 1043/1.

PACKAGING DISPOSAL METHODS

Corrugated cardboard packaging complies with European Directive 94/62 EC on packaging and packaging waste. Corrugated cardboard is 100% recyclable and must be disposed of according to the separate collection procedures established by the local authority.

As far as plastic film is concerned, it too complies with the requirements of the European Packaging and Packaging Waste Directive 94/62/EC. Plastic packaging should be delivered in accordance with the separate collection procedures established by the local authority.

On the other hand, the tertiary packaging (pallets) used for transporting the machines are taken back by a specialised company and reused, thus avoiding the generation of waste.

WASTEWATER DISPOSAL METHODS

Waste water produced by machine operations must be disposed of according to the type of solution produced in a manner consistent with industry standards.

CONSUMABLES DISPOSAL METHOD

Wear parts, such as tubes, wheels, filters, etc., are removable and replaceable*. They must also be disposed of at the end of their life in accordance with environmental regulations. Those authorised for periodic maintenance will be properly informed and trained on how best to handle them.

*This procedure is in line with the 'new action plan for the circular economy. For a cleaner and more competitive Europe'- COM (2020) 98.





STEP 7 RECYCLING

The policy on the use of raw materials is geared towards favouring production models consistent with Goal 12 - **Ensure sustainable production and consumption patterns** - defined by the United Nations 2030 Agenda.

A sustainable pattern that promotes: high quality and durable raw materials, recycled materials (e.g. packaging and recycled plastic parts of machines), end-of-life recyclability of materials in a circular economy perspective.



Attention is paid to all stages of the life cycle of a Ghibli & Wirbel machine, from the selection of raw material suppliers and components to the end of the product's life.

Following the introduction of recycled plastic in this process, the focus on the production cycle has increased further. Ghibli & Wirbel's main objective, to manufacture more sustainable machines, was only achieved when it was possible to **guarantee the same quality as the products in the standard range**. Numerous tests were carried out to verify and certify that the recycled plastic components of the various machines meet the technical requirements and guarantee excellent performance.

All plastics used are recyclable and are marked to make the type of plastic present immediately recognisable and facilitate recycling.

Most production waste is reprocessed and used to make new components and accessories.



RESPECT FOR THE ENVIRONMENT

by reducing the use of virgin plastic in favour of recycled.






REDUCTION OF WASTE

thanks to the greater care that is taken in production and, more generally, in the entire product life cycle.



ANNEX 1

		Ref. Certif. No. DE 2-029113
IEC SYSTEM FOR MUTUAL RECOGNITION OF TEST CERTIFICATES FOR ELECTRICAL EQUIPMENT (IECEE) CB SCHEME		
CB TEST CERTIFICATE		
Product	Floor treatment machines with single brush.	
Name and address of the applicant	Ghibli & Wirbel S.p.A. Via Circonvallazione 5 27020 Dorno PV, Italy	
Name and address of the manufacturer	Ghibli & Wirbel S.p.A. Via Circonvallazione 5 27020 Dorno PV, Italy	
Name and address of the factory	Ghibli & Wirbel S.p.A. Via Circonvallazione 5 27020 Dorno PV, Italy	
Ratings and principal characteristics	a-b) 220-240V; 50Hz or 60Hz c) 110V; 50Hz or 60Hz Class I	
Trademark (if any)	Ghibli & Wirbel or Wirbel	
Customer's Testing Facility (CTF) Stage used	N/A	
Model / Type Ref.	a) Ghibli & Wirbel brand models: SB 143 xxx , SB 150 yyy , O 143 zzz b) Wirbel brand models: C 143 xxx , C 150 yyy O 143 zzz, c) SB 143 L08, C 143 L08, SB 143 L13, C 143 L13, O 143 U10, O 143 U13 (for speaking code see test report)	
Additional information (if necessary may also be reported on page 2)		
A sample of the product was tested and found to be in conformity with	IEC 60335-1:2010+A1+A2 IEC 60335-2-67:2012+A1 for national differences see test report	
As shown in the Test Report Ref. No. which forms part of this Certificate	28119920 001	
This CB Test Certificate is issued by the National Certification Body		
		TÜV Rheinland LGA Products GmbH Tillystr. 2, 90431 Nürnberg, Germany Phone + 49 221 806-1371 Fax + 49 221 806-3935 Mail: cert-validity@de.tuv.com Web : www.tuv.com
Date:	2020-09-24	Signature:  F. Ceriani

Disclaimer: This is an electronically released document. The authenticity of this certificate can be verified on the IECEE Website "http://certificates.iecee.org"

[illegible]

**If on board



RESOURCES

Ghibli & Wirbel makes available on its website (www.ghibliwirbel.com) and on its My G&W reserved area all machine-specific documentation, including this EU Green Sheet.

- Data sheet
- Use and maintenance
- EC Declaration of Conformity
- Warnings and safety
- Wiring diagram
- Troubleshooting

CONTACT

For more information write to: green@ghibliwirbel.com

GHIBLI & WIRBEL SpA

Registered office
Via Enrico Fermi, 43
37136 Verona (VR) - Italy

Operations and production site
Via Circonvallazione, 5
27020 Dorno (PV) - Italy

www.ghibliwirbel.com

Tel +39.0382.848811
Fax +39.0382.84668
Email info@ghibliwirbel.com

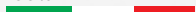
VAT 03976160287



GoinGreen

Ghibli & Wirbel Sustainable Vision

100% MADE IN ITALY



Registered office

Via Enrico Fermi, 43 - 37136 VERONA (VR) - Italy

Operational Headquarters

Via Circonvallazione, 5 - 27020 Dorno (PV) - Italy

P. +39 0382 848811 - F.+39 0382 84668 - M. info@ghibliwirbel.com

www.ghibliwirbel.com



ISO 9001

